

RATINGS 10-29-16

Welcome back to By the Numbers! This is a rating system that uses wins, losses, points for, points against and schedule (and nothing else) to rank college football teams. A more thorough description of the system is in my new book *Sports Math* (now available!) and my website www.roanoke.edu/mcsp/minton/bynumbers.html . Last week was as bad for the ratings as it was for the unbeaten teams: just 69% winners and 41% against the spread.

More Halloween on Saturday, as four unbeaten got tricked and three others were scared. The first committee rankings come out Tuesday. The committee has it relatively easy with exactly four power conference unbeatens remaining. My ratings still don't have Washington in the top four, but a top three of Alabama-Michigan-Clemson looks about right. If you check out the "wins" column below, you'll notice that Clemson is a strong second if you just look at strength of schedule and wins-losses. The opening win at Auburn is looking good, and the "cupcake" that they struggled against, Troy, is 7-1 and in the top 35. If you add Clemson's offense and defense rating, you won't get a very large number. This is where the close wins hurt a team in these ratings, which are 60% wins and 40% points.

Washington's big win at Utah came on a 58-yard punt return with 1:44 left. On the replay I saw three blocks in the back/side that could have brought it back and presumably given both teams a chance in overtime. I guess that is the type of "gutsy" call that Jimbo Fisher wanted for Florida State.

Last week's trivia question answer was Jim Kiick, former Wyoming Cowboy and later part of the Butch Cassidy and the Sundance Kid Miami Dolphin backfield. Wyoming, by the way, took over first place in the Mountain West by beating Boise State for the first time. The Cowboys broke a 28-28 tie by scoring the winning safety, on a sack at the 2 that forced a fumble which went out of the end zone.

This is a good time to sit back and take stock of the standings. This week's games don't look like they have potential for many upsets. This is what it looks like as we head down the stretch. The service teams all have winning records! Army and Air Force play this week, both at 5-3. Navy at 5-2 plays Notre Dame in an interesting matchup. How close is Brian Kelly to being dismissed? Navy and Temple are division leaders in the AAC. While Brian Kelly wants to stay at Notre Dame, Tom Herman at Houston seems to be losing his opportunity to *not* stay at Houston and move up to Texas or LSU. Clemson and Virginia Tech lead in the ACC, and Oklahoma is the Big 12 leader. The Big 12 certainly looks like the power conference that will be left out of the playoffs. Each of the other four has an unbeaten team. There is still a lot of time, and a slate of 2+ loss conference champions like Virginia Tech, Auburn, Wisconsin, and Colorado could make Oklahoma look good. Michigan and Nebraska are on top of their

divisions in the B1G, but you could easily revise that to a Michigan-Ohio State tie and a Wisconsin lead. Ohio and (unbeaten!) Western Michigan lead MAC divisions, Wyoming and San Diego State lead Mountain West divisions, Washington and Washington are tied in one division and Colorado leads the other Pac-12 division, and Florida and Alabama have SEC leads.

The big game this week is Alabama at LSU. The Tide had a week off to prepare and to celebrate Nick Saban's 65th birthday. LSU is Hat-less, but Leonard Fournette had a big game against Ole Miss (the best 3-5 team in the country). The Tigers are still in the hunt in the SEC West, but they will need special bayou magic to hold back the Tide.

Colorado hosts UCLA as a double-digit favorite to maintain its division lead. The Buffaloes have quietly put themselves in a nice position (#10 here), while UCLA has been destroyed by injuries. 50 years ago, this would have been an interesting intersectional game, as the two schools played in different conferences. Colorado finished second in the Big 8, while UCLA finished somewhere in the AAWU (Athletic Association of Western Universities). The Bruins were 3-1 in conference, tied with Oregon State, but "behind" USC's 4-1. The schedules were uneven, and the athletic directors voted on the AAWU representative in the Rose Bowl. Ignoring UCLA's 14-7 over USC, and ignoring UCLA's superior overall 9-1 record, USC was voted in. The Trojans rewarded the conference by immediately losing to Notre Dame 51-0 and then losing the Rose Bowl. UCLA, of course, did not play in a bowl game, as the Rose Bowl had a monopoly on AAWU and Big 10 teams. The Rose Bowl also was denied "national champion" Michigan State, which stayed home because they had played in the Rose Bowl the year before. The world has changed! UCLA was led by a star quarterback and a star running back. The running back, Mel Farr, was a big star in the NFL for Detroit. The quarterback won the Heisman Trophy in 1967 but was one of a long line of Heisman quarterbacks who were not NFL successes. His Washington Redskin career consisted of five games, 1 career pass – incomplete (do I sense a football version of *Field of Dreams*?), 5 rushes for 18 yards, and a pass reception for 12 yards. More receptions than completions! Name the quarterback, whose college nickname was "The Great One."

Virginia Tech got a good win at Pittsburgh, and now travels to Duke. Virginia came close against Louisville, and gets Wake Forest next (Vegas thinks this will be close, my ratings not so much). Nationally, Nebraska visits the Horseshoe in a game against Ohio State that both teams need to stay in their division races. Neither Vegas nor my ratings think it will be close. A Nebraska loss puts Wisconsin in the division lead, IF the Badgers can win at Northwestern; the Wildcats are much improved, a concept that my ratings are not familiar with. (The ratings do not use the dates of the games or upward/downward trends). Florida is at Arkansas; a Gator win could put them in the SEC Championship Game.

Here are the predictions.

Virginia Tech 32, Duke 14

Wake Forest 28, Virginia 14

Alabama 28, LSU 14

Ohio State 28, Nebraska 13

Wisconsin 28, Northwestern 15


Navy 34, Notre Dame 28

Air Force 24, Army 23

Florida 24, Arkansas 19

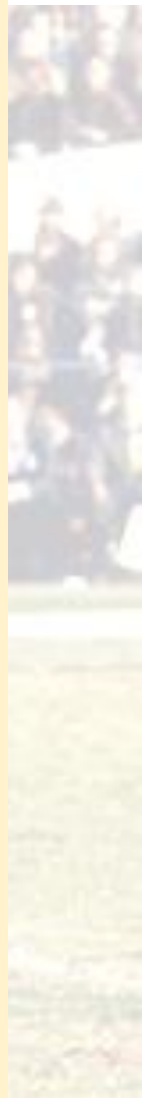
Penn State 33, Iowa 17

And the ratings:

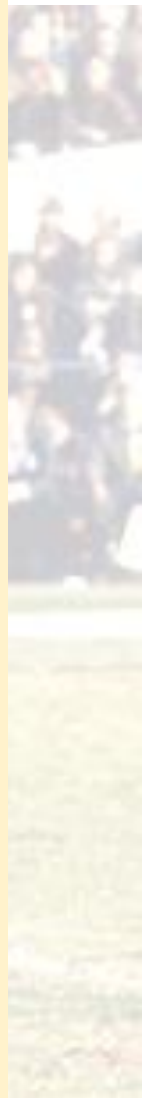


		Overall	Wins	Offense	Defense
1	Alabama	152.4	98.8	52.4	26.2
2	Michigan	149.6	91.2	57.1	24.5
3	Clemson	145.3	94.2	47.2	19.6
4	Ohio State	143.8	86.1	49.6	24.4
5	Washington	141.0	85.4	49.9	17.9
6	Texas A&M	140.6	88.4	46.5	16.5
7	Auburn	139.7	82.0	46.0	23.2
8	Wisconsin	137.4	81.7	38.8	25.0
9	Louisville	137.2	77.5	57.5	11.4
10	Colorado	135.2	77.7	43.3	20.2
11	Penn State	134.9	81.4	44.0	13.9
12	LSU	134.2	74.9	39.5	25.5
13	Washington St	134.2	79.9	46.2	11.9
14	Boise St	133.5	82.7	38.9	13.7
15	Western Michigan	133.5	80.0	45.3	11.0
16	West Virginia	133.4	79.1	38.7	18.6
17	Nebraska	133.0	79.5	37.4	18.3
18	Virginia Tech	132.8	75.4	42.9	17.8
19	Southern Cal	132.7	76.9	42.3	16.1
20	Tennessee	132.3	80.8	45.1	7.1
21	Florida	132.2	77.2	34.3	22.5
22	Florida St	132.0	76.1	44.2	13.6
23	Stanford	130.0	74.6	32.1	22.6
24	Oklahoma	129.6	71.8	52.1	5.4
25	North Carolina	129.2	74.9	40.9	11.5
26	Utah	129.2	76.0	36.1	14.8
27	Houston	127.1	69.8	41.8	12.1
28	Minnesota	126.3	71.5	39.0	10.6

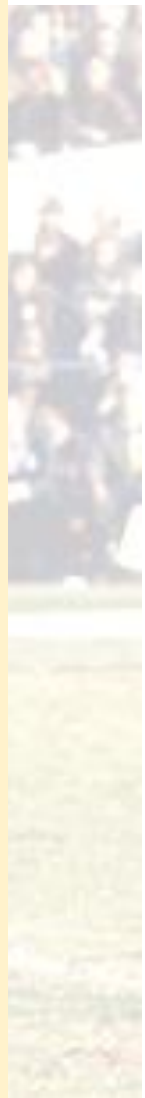
29	South Florida	125.8	68.9	48.9	3.0
30	North Dakota St	125.8	75.8	28.8	13.9
31	Oklahoma St	125.6	66.7	45.7	8.8
32	Mississippi	125.2	63.4	51.3	6.5
33	Troy	125.1	70.7	37.5	10.3
34	Tulsa	125.1	69.0	48.1	2.0
35	Pittsburgh	125.1	68.2	47.5	3.5
36	Temple	123.4	65.2	39.7	11.1
37	Arkansas	123.4	69.4	37.2	7.9
38	Baylor	123.1	61.0	43.8	11.8
39	Eastern Washington	123.0	69.0	48.0	-3.2
40	Georgia Tech	122.9	66.7	36.0	11.6
41	Appalachian St	122.8	69.2	28.7	15.2
42	San Diego St	122.7	66.7	33.8	13.3
43	Brigham Young	122.6	63.8	38.2	12.6
44	Iowa	122.6	63.9	34.6	15.9
45	Navy	121.9	66.3	39.2	6.5
46	Wyoming	121.7	70.0	39.8	0.5
47	Kentucky	121.6	69.0	36.7	4.6
48	Arizona St	121.4	64.8	41.5	4.9
49	Kansas St	121.3	61.1	35.5	15.6
50	Northwestern	120.7	59.1	38.8	13.5
51	UCLA	120.2	59.4	38.8	11.8
52	California	120.0	62.5	48.8	-2.9
53	Miami FL	120.0	56.6	39.3	14.5
54	Indiana	119.8	61.9	39.2	7.1
55	Toledo	119.5	62.0	40.4	4.9
56	Western Kentucky	118.8	58.1	44.1	4.7
57	Oregon	118.3	58.3	49.7	-2.4
58	Georgia	117.9	61.4	32.1	9.9
59	Memphis	117.5	56.9	40.0	7.1
60	South Carolina	117.4	61.7	24.9	15.6
61	Maryland	117.3	58.2	35.0	9.8
62	TCU	117.2	56.6	38.7	8.1
63	Central Florida	117.2	55.6	38.7	9.4
64	North Carolina St	117.1	56.4	33.6	13.1
65	Wake Forest	117.0	58.9	28.5	14.7
66	Texas	116.9	54.4	41.5	7.5
67	Vanderbilt	116.8	60.4	28.2	12.6
68	The Citadel	116.5	67.3	26.2	4.6
69	Texas Tech	116.5	55.0	51.8	-4.8
70	Mississippi St	115.1	53.8	40.6	4.8
71	Colorado St	115.1	58.9	31.8	6.6
72	Louisiana Tech	115.0	54.2	42.5	1.9
73	SMU	114.8	57.0	33.0	7.2



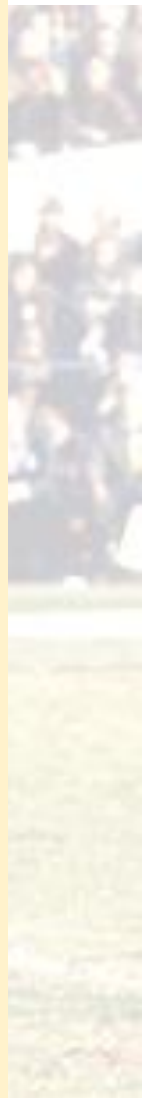
74	Middle Tennessee St	114.7	57.5	38.6	0.7
75	Air Force	114.7	56.0	34.6	6.7
76	Syracuse	114.4	56.4	34.7	5.3
77	Jacksonville St	114.0	57.0	30.8	7.4
78	Oregon St	113.9	54.8	33.6	7.5
79	New Mexico	113.7	58.6	37.3	-1.9
80	Chattanooga	113.5	60.4	28.4	4.2
81	Youngstown St	113.5	57.9	24.1	11.7
82	Western Illinois	112.3	62.5	27.3	-0.7
83	Notre Dame	111.9	46.3	41.2	6.1
84	Central Arkansas	111.6	53.4	28.9	8.0
85	Sam Houston St	111.2	53.2	42.4	-6.1
86	Boston College	111.2	52.6	29.5	7.6
87	South Dakota St	111.2	55.0	37.3	-3.5
88	Samford	111.1	55.8	37.4	-4.8
89	Duke	111.0	47.5	32.1	11.3
90	Arizona	111.0	50.3	35.7	4.0
91	Michigan St	111.0	46.8	35.5	8.9
92	Southern Miss	110.9	53.3	36.1	-0.7
93	Central Michigan	110.7	52.3	33.0	3.4
94	Cincinnati	110.1	51.8	27.1	8.3
95	Army	110.0	46.2	32.6	10.0
96	Utah St	110.0	50.7	30.7	6.0
97	Ohio U.	110.0	54.6	28.1	3.3
98	East Carolina	110.0	47.5	36.8	4.0
99	Arkansas St	109.7	51.7	29.3	5.3
100	Georgia Southern	109.2	53.1	28.8	2.7
101	South Alabama	109.0	51.3	26.8	6.7
102	Charleston Southern	108.8	54.1	34.4	-5.3
103	Illinois	108.5	49.0	28.5	6.7
104	Akron	108.5	52.3	37.5	-6.7
105	James Madison	108.3	47.9	41.5	-5.2
106	Old Dominion	108.2	51.1	33.6	-2.1
107	Idaho	107.8	55.7	27.9	-3.4
108	Missouri	107.5	42.8	40.0	1.0
109	Virginia	107.4	44.6	31.7	6.6
110	Cal Poly SLO	107.0	51.5	33.9	-5.8
111	Richmond	106.8	52.3	28.6	-2.1
112	Tulane	106.8	44.7	30.6	6.0
113	Hawai'i	106.6	48.2	32.5	-1.1
114	Northern Iowa	106.3	41.0	28.8	11.4
115	Rutgers	106.1	49.0	28.0	1.0
116	Wofford	105.7	48.1	20.9	8.5
117	North Dakota	105.6	52.1	22.2	1.6
118	Eastern Michigan	105.5	49.4	27.3	-0.3



119	Connecticut	105.4	45.6	24.1	7.8
120	Montana	105.3	43.1	35.8	-0.8
121	Northern Illinois	105.2	43.5	33.2	1.1
122	Liberty	104.8	46.2	29.6	0.0
123	Purdue	104.5	46.9	34.1	-6.2
124	South Dakota	104.2	48.9	34.2	-9.6
125	Coastal Carolina	104.2	44.6	33.7	-3.5
126	Kent St	103.7	43.9	25.1	4.9
127	Villanova	103.7	46.9	18.7	7.3
128	North Texas	103.4	43.6	28.4	1.2
129	Louisiana-Lafayette	102.6	45.3	25.3	0.2
130	Lehigh	102.1	42.4	34.5	-6.6
131	Texas-San Antonio	102.0	41.6	27.1	1.7
132	Georgia St	102.0	38.8	25.8	6.6
133	North Carolina A&T	101.8	48.1	26.2	-6.5
134	Ball St	101.3	38.9	27.4	3.4
135	Iowa St	101.1	33.1	33.7	4.3
136	Northern Arizona	100.9	41.5	25.0	1.1
137	Miami OH	100.7	40.3	20.2	7.0
138	Illinois St	100.5	39.6	22.8	4.9
139	UNLV	99.4	37.2	32.2	-4.0
140	Kennesaw St	99.4	42.5	31.3	-10.1
141	San José St	99.0	40.1	25.0	-1.7
142	Grambling St	98.7	38.4	27.0	-2.1
143	New Mexico St	98.5	44.2	26.8	-10.2
144	Nevada	98.4	37.7	20.9	4.0
145	Southern Utah	98.4	40.8	24.5	-3.7
146	Stony Brook	98.0	44.0	14.4	1.3
147	Missouri St	97.8	41.2	25.1	-6.2
148	Mercer	97.8	40.9	27.9	-8.6
149	Weber St	97.7	42.9	22.6	-6.2
150	New Hampshire	97.2	39.2	20.9	-0.9
151	Albany NY	96.8	37.9	21.1	-0.3
152	Northern Colorado	96.4	40.2	24.9	-8.2
153	Massachusetts	96.3	32.3	28.9	-1.9
154	Maine	95.9	39.8	19.0	-3.0
155	Indiana St	95.9	36.4	26.5	-6.0
156	Florida Int'l	95.8	35.2	24.1	-2.4
157	Eastern Illinois	95.2	37.3	25.6	-8.0
158	Louisiana-Monroe	95.1	39.7	22.5	-8.5
159	Furman	94.7	32.0	23.0	0.2
160	UNC-Charlotte	94.4	35.3	24.9	-6.8
161	Kansas	94.0	32.0	22.0	-0.5
162	San Diego	93.8	32.4	22.8	-2.1
163	Marshall	93.6	29.1	27.1	-2.6



164	Harvard	93.5	37.9	19.7	-7.1
165	Princeton	93.5	31.5	25.9	-5.1
166	Fresno St	93.3	29.3	24.6	-1.2
167	Bowling Green	93.1	34.9	27.5	-11.8
168	Tennessee-Martin	92.9	29.9	25.5	-3.9
169	UTEP	92.2	32.5	21.6	-5.2
170	UC-Davis	92.0	31.8	19.9	-3.1
171	St Francis PA	91.8	30.6	16.5	1.6
172	SE Louisiana	91.6	33.1	22.5	-8.3
173	Nicholls St	91.4	30.3	23.1	-5.6
174	Duquesne	91.0	33.2	22.6	-10.0
175	North Carolina Central	91.0	41.1	15.2	-13.2
176	Tennessee St	91.0	31.5	24.6	-9.9
177	Buffalo	90.9	29.1	21.1	-3.3
178	Rice	90.3	26.1	26.1	-5.8
179	Fordham	89.9	32.2	27.3	-16.1
180	Colgate	89.9	26.2	22.9	-3.9
181	Lamar	89.6	28.2	17.7	-2.0
182	Texas St-San Marcos	89.5	32.9	23.6	-14.5
183	Pennsylvania	89.1	28.7	18.4	-4.8
184	Southern U.	88.4	31.7	25.8	-17.7
185	South Carolina St	88.2	31.8	13.7	-6.3
186	Gardner-Webb	88.0	24.9	18.9	-2.9
187	Southern Illinois	87.6	19.4	29.3	-6.8
188	Tennessee Tech	87.6	24.4	20.9	-5.2
189	Sacred Heart	87.5	29.9	20.3	-12.1
190	VMI	87.4	28.3	13.9	-4.0
191	Dayton	87.0	28.1	14.6	-5.2
192	Western Carolina	86.7	24.4	21.8	-8.3
193	McNeese St	86.4	21.8	20.8	-4.5
194	Portland St	86.4	24.8	26.3	-14.0
195	Murray St	86.1	22.4	22.3	-7.6
196	Monmouth NJ	85.8	28.4	15.7	-9.8
197	Prairie View A&M	85.7	31.0	18.6	-16.6
198	SE Missouri St	85.5	19.8	15.7	0.9
199	William & Mary	85.3	23.6	17.4	-6.4
200	Delaware	85.1	21.6	16.7	-3.5
201	Florida Atlantic	85.0	19.2	22.4	-6.3
202	East Tennessee St	84.3	30.4	11.5	-12.1
203	Montana St	83.4	18.9	16.2	-3.5
204	Houston Baptist	82.5	25.4	12.9	-11.3
205	Towson	82.3	17.7	19.7	-8.4
206	Dartmouth	81.5	18.3	11.1	-2.5
207	Idaho St	81.1	22.4	18.4	-16.2
208	Stephen F. Austin	80.6	20.7	21.7	-18.5



209	Presbyterian	80.3	23.7	5.4	-7.0
210	Eastern Kentucky	80.1	14.1	17.6	-6.9
211	Hampton	79.3	22.9	7.6	-10.7
212	Bucknell	79.2	16.2	12.6	-6.9
213	Florida A&M	78.7	25.1	10.2	-17.7
214	Cornell NY	78.5	18.7	12.9	-12.3
215	Holy Cross	78.3	15.4	17.9	-13.5
216	Elon	77.1	15.7	8.8	-7.8
217	Alcorn St	77.0	19.2	13.5	-17.3
218	Sacramento St	76.5	15.0	15.6	-15.1
219	Wagner	76.0	10.0	12.2	5.9
220	Northwestern St	75.6	8.0	18.7	-11.2
221	Bethune-Cookman	75.0	13.7	11.8	-13.3
222	Drake	74.9	17.1	10.1	-16.2
223	Robert Morris PA	74.5	9.7	7.0	-4.3
224	Savannah St	74.3	22.1	-0.1	-14.5
225	Jacksonville FL	74.0	14.5	16.4	-21.6
226	Georgetown DC	73.7	10.5	4.2	-4.5
227	Bryant	73.6	5.9	22.1	-16.8
228	Yale	72.9	12.0	14.3	-18.7
229	Austin Peay	72.8	7.8	20.2	-19.2
230	Jackson St	72.8	14.6	4.6	-12.8
231	Rhode Island	72.1	13.6	10.0	-18.6
232	Texas Southern	71.9	11.6	7.0	-13.5
233	Lafayette	71.8	6.9	14.7	-15.1
234	Columbia	71.7	7.4	9.3	-10.5
235	Brown	71.2	7.0	9.1	-11.2
236	Marist	69.7	6.9	5.8	-11.3
237	Alabama A&M	69.1	11.1	9.4	-22.3
238	Norfolk St	67.4	5.6	3.8	-13.5
239	Howard	67.0	6.6	10.1	-22.2
240	Stetson	66.3	2.4	3.5	-11.7
241	Alabama St	66.0	2.7	9.2	-18.5
242	Central Conn St	63.3	-8.0	11.5	-13.2
243	Morgan St	63.0	3.5	1.9	-19.7
244	Butler	62.6	-2.7	7.3	-17.8
245	Morehead St	62.2	-1.5	15.8	-28.9
246	Valparaiso	60.3	-3.0	4.1	-20.1
247	Campbell	57.5	-8.5	7.0	-22.6
248	Arkansas-Pine Bluff	57.1	-0.1	1.4	-29.3
249	Delaware St	55.8	-6.3	3.5	-26.3
250	Mississippi Valley St	54.6	-4.8	2.4	-30.3
251	Davidson	48.5	-21.3	2.7	-23.9

